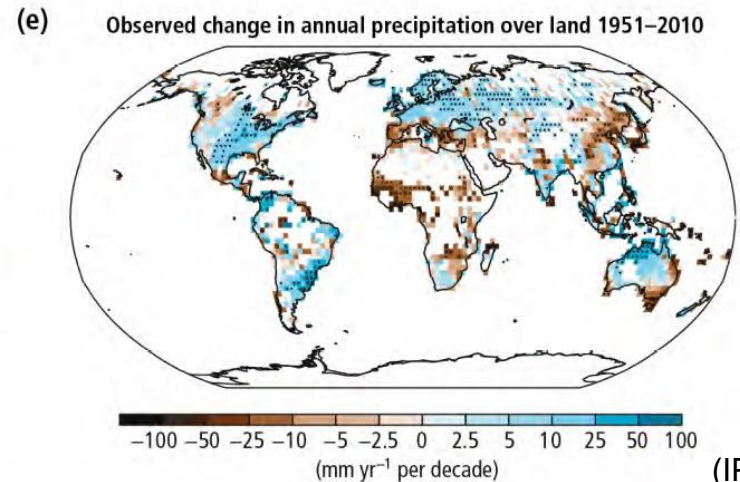
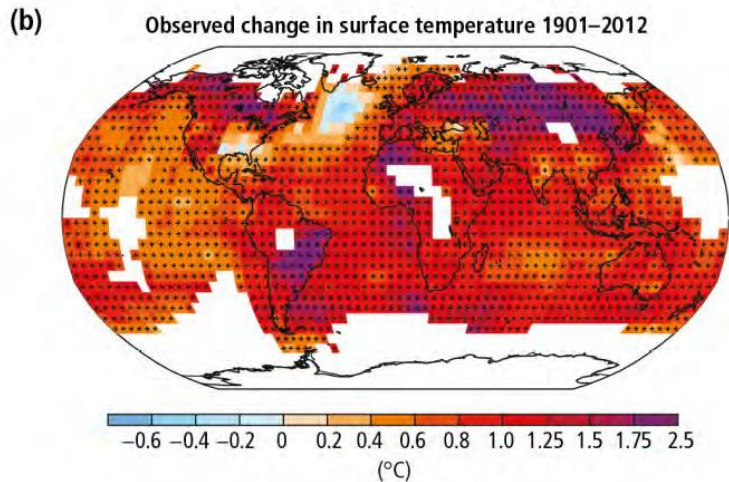
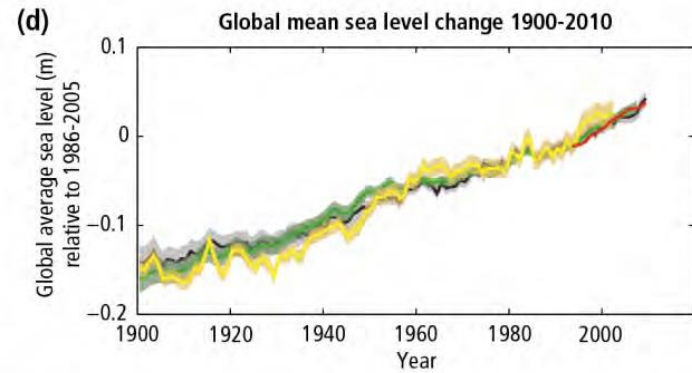
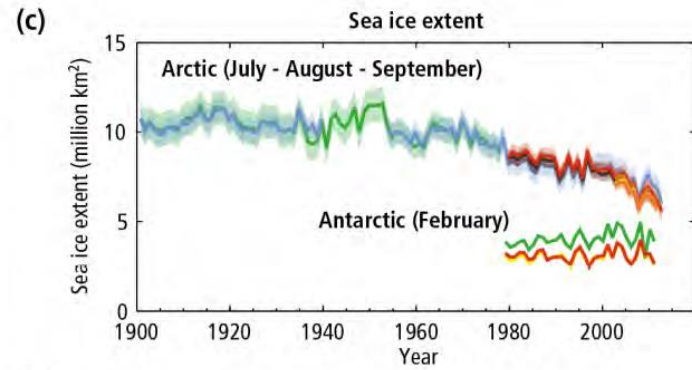
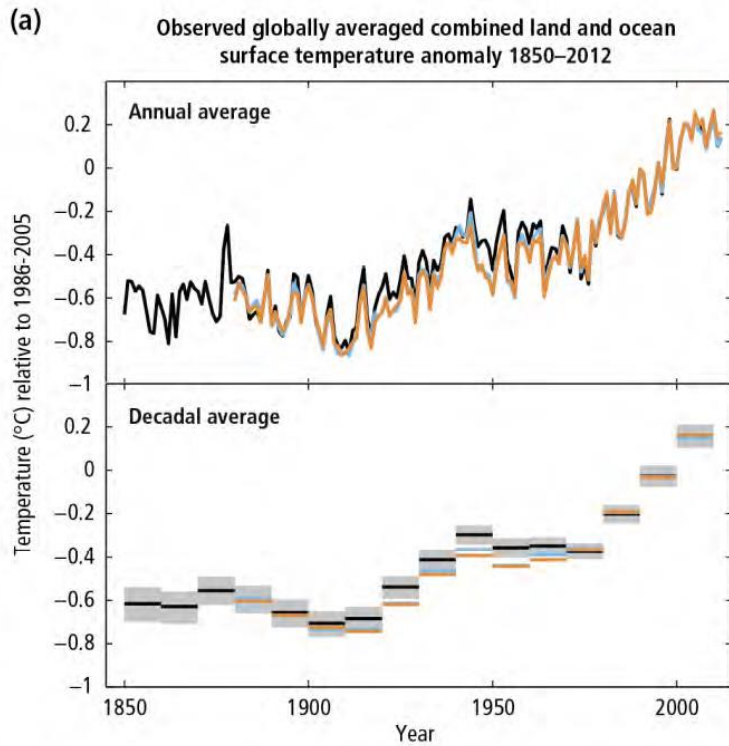
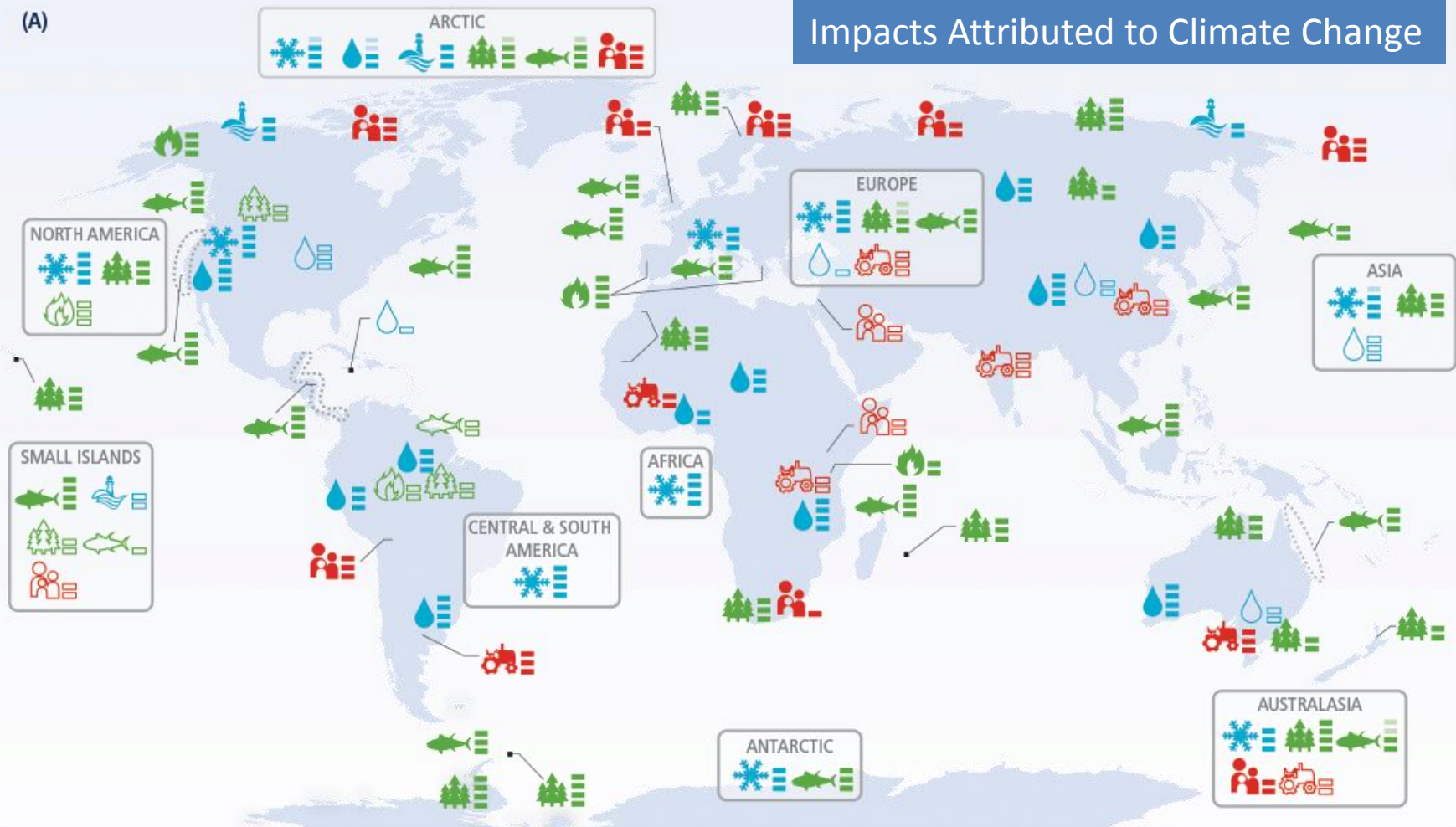


Warming of the climate system is unequivocal....The atmosphere and ocean have warmed, the amounts of snow and ice have diminished, and sea level has risen.



Impacts Attributed to Climate Change

(A)



Confidence in attribution to climate change

- very low
 = low
 ≡ med
 ≡≡ high
 ≡≡≡ very high

≡≡ □ indicates confidence range

Observed impacts attributed to climate change for

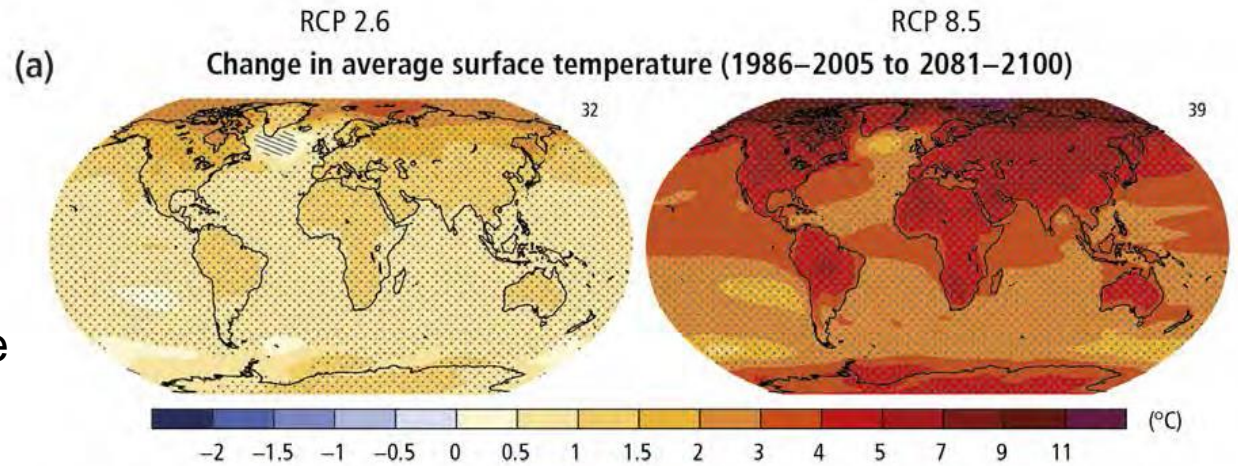
Physical systems		Biological systems		Human and managed systems		□ Regional-scale impacts

Glaciers, snow, ice, and/or permafrost
 Rivers, lakes, floods, and/or drought
 Coastal erosion and/or sea level effects
 Terrestrial ecosystems
 Wildfire
 Marine ecosystems
 Food production
 Livelihoods, health, and/or economics

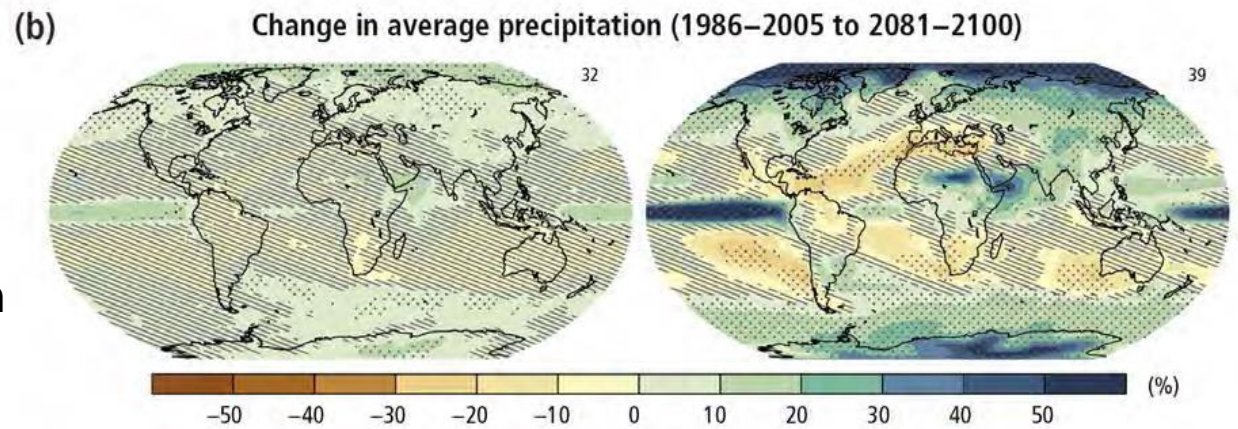
Outlined symbols = Minor contribution of climate change
Filled symbols = Major contribution of climate change

Projected Change by 2100

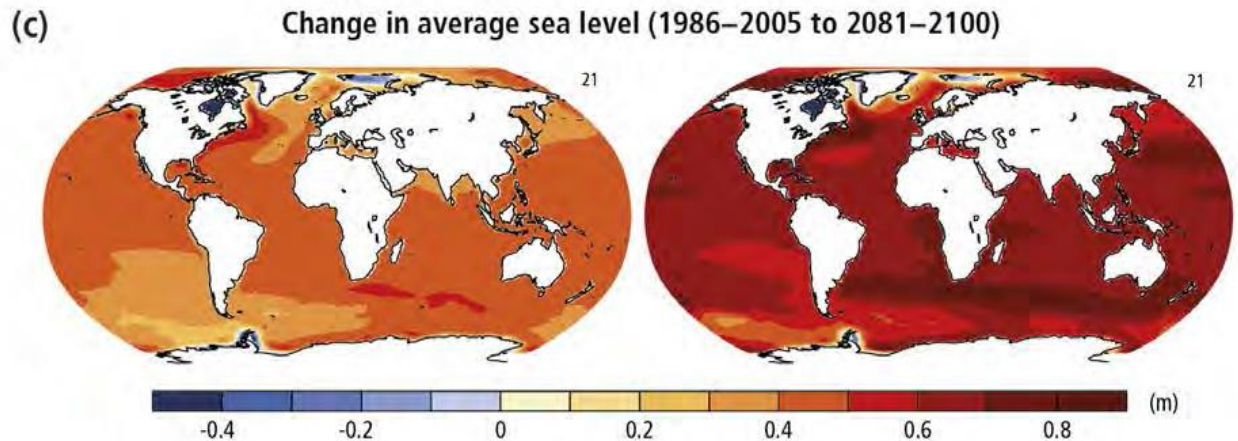
Temperature



Precipitation

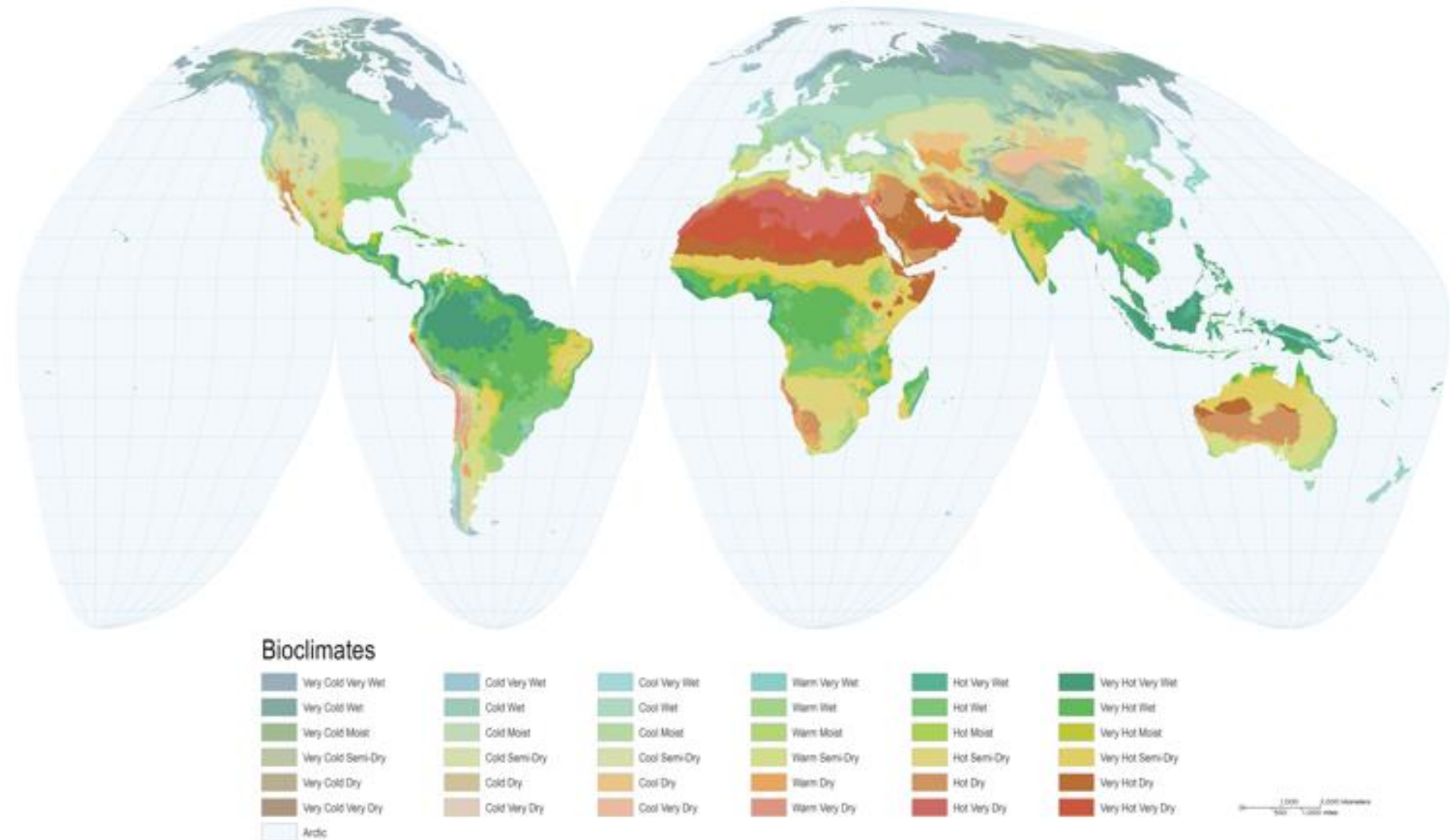


Sea Level



Bioclimate Regions

modeled from temperature and precipitation data (modified from Metzger et al., 2013)



(Sayre et al., *A New Map of Global Ecological Land Units*, 2014)

Opportunity space and climate-resilient pathways.

